

BB4500 PORTABLE BORING MACHINE

FEATURES ■ SET-UP & OPERATION
COMPONENTS & ACCESSORIES ■ TECHNICAL DATA

The proven technology of the world famous Climax BB5000 Boring Machine is now available in this smaller, affordable package.

Quick and Easy Setup

- Modular components make setup quick and easy.
- Fast and easy setup using high quality cast-iron set-up cones and spherical bearing mounts.
- Typical set-up time for an experienced operator is 30 minutes or less.

Powerful

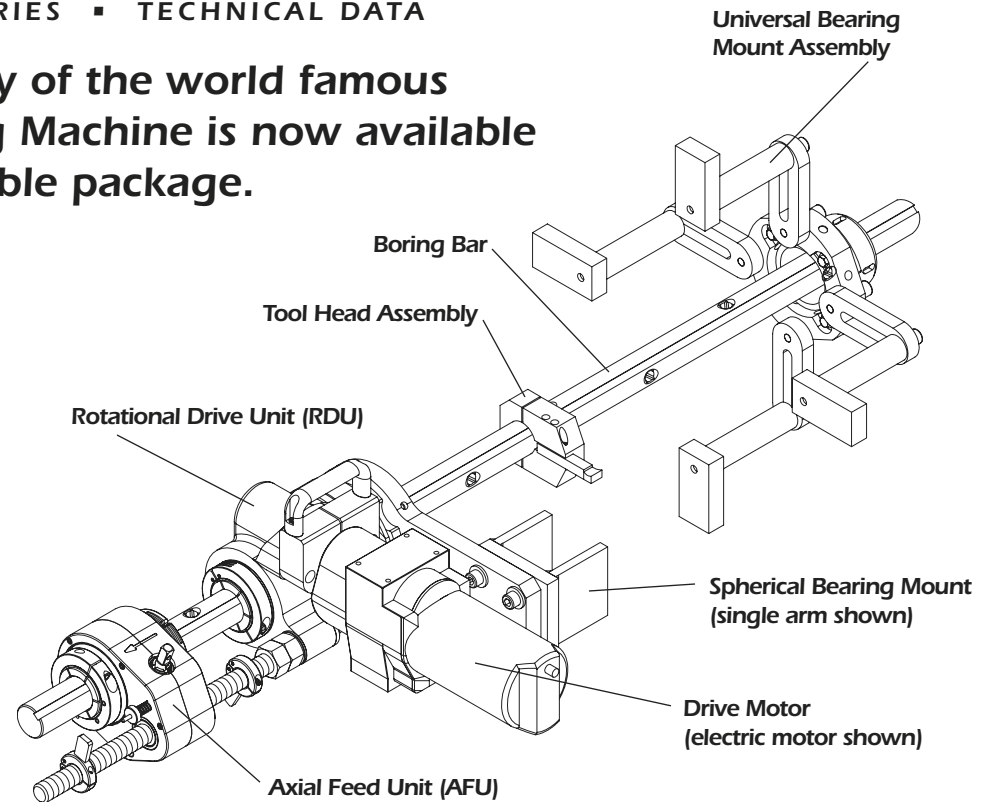
- Over 100 ft lbs (135 N•m) of torque at the bar.
- Specially-designed rotational drive unit provides a 4:1 worm gear reduction for increased torque at all speeds.

Compact

- Extremely compact, and can be used easily in cramped, tight work spaces.
- Compact design completes jobs where other machines won't fit.

Affordable and Flexible

- The Climax BB4500 Portable Boring Machine is your "best-value" portable boring machine.
- Through-bar design allows the rotational drive and feed unit to be mounted anywhere along the bar, even separate from one another.
- Climax-patented mounting components provide the flexibility to handle challenging boring jobs even when space is limited.



Versatile

- Available with electric, hydraulic, or pneumatic motor options.
- Fast, easy two-bolt change-out process to switch motors.
- Available in a variety of bar lengths, from 4 to 20 feet (1219.2 to 6096 mm) Bars are straightened, and have ½ inch or 12 mm square-broached tooling holes.
- Many accessories available, including small bore kit, facing and grooving head options, and bore measuring tool.

Quality Components

- Keyed, chromed 1-3/4 inch (44.5 mm) bar.
- World's best rotational drive and axial feed unit.
- Patented mounting system.
- High-quality components provide smooth, reliable operation to get the job done.



CLIMAX[®]
Portable Machine Tools, Inc.

Bringing the solution to you.

BB4500 Specifications



	<u>Inch</u>	<u>mm</u>
Boring Bar Diameter		
Standard	1.75	44.5
Optional	1.25	31.8
Boring Diameter		
Standard	2 - 10	50.8 - 254
Optional (minimum)	1.5	38.1
Boring Stroke		
Standard	12	304.8
Optional	24	609.6
Power Options		
Electric: up to 145 free speed bar RPM	1.3 Hp	1.0 kW
Electric: up to 168 free speed bar RPM	2.3 Hp	1.7 kW
Hydraulic: up to 148 free speed bar RPM	3.9 Hp	2.9 kW
Pneumatic: up to 120 bar free speed RPM	3.0 Hp	2.2 kW

All dimensions should be considered reference, contact your Climax Territory Manager for precision dimensions.

Mounting Options		
Single Arm		
Double Arm		
Universal		
Rotational Drive Unit	4:1 worm gear reduction	
Feed	mechanical, reversible	
Feed Rate (per revolution)	0 - 0.019	0 - 0.48
Set-Up Cones		
Standard	2 - 10	50.8 - 254
Optional	1.5 - 3.25	38.1 - 82.5

Ship Weight (approx.) for typical machine (typical machine with single arm) 406 lbs 185 kg

mounts, universal mounts, set-up cones, electric motor, and metal shipping container - PN BB4500.1.11.011.22.20)

Ship Weight (approx.) of boring bar 1.03 lbs/inch 0.019 kg/mm
(standard 1.75 inch (44.5 mm) bar, including metal shipping container)

Shipping Dimensions for typical machine (Shipped in 2 containers, 3 containers for hydraulic power unit option)

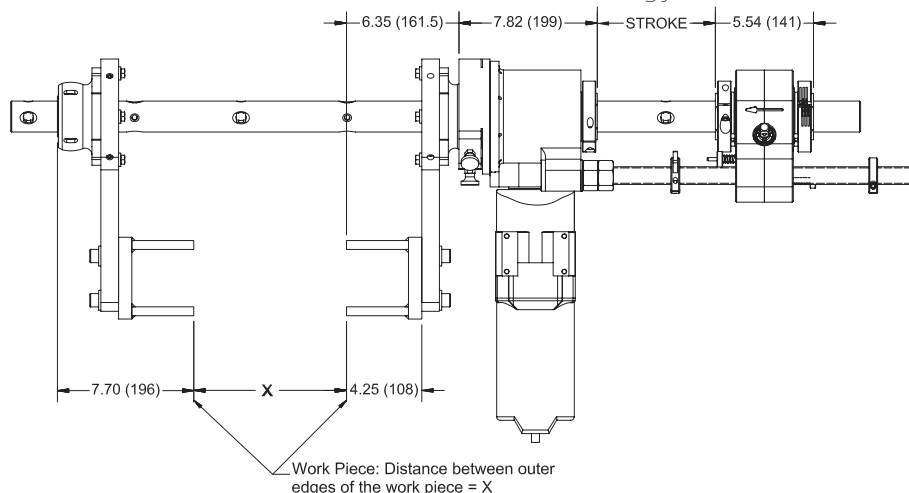
Machine W, D, H	47 x 26 x 16	1194 x 661 x 407
Bar 72 inch (1829 mm) W, D, H	74.5 x 5 x 5.5	1893 x 127 x 140
HPU (5 hp) W, D, H	29 x 26 x 44	737 x 661 x 1118

Here's how to determine the length of the boring bar you will require:

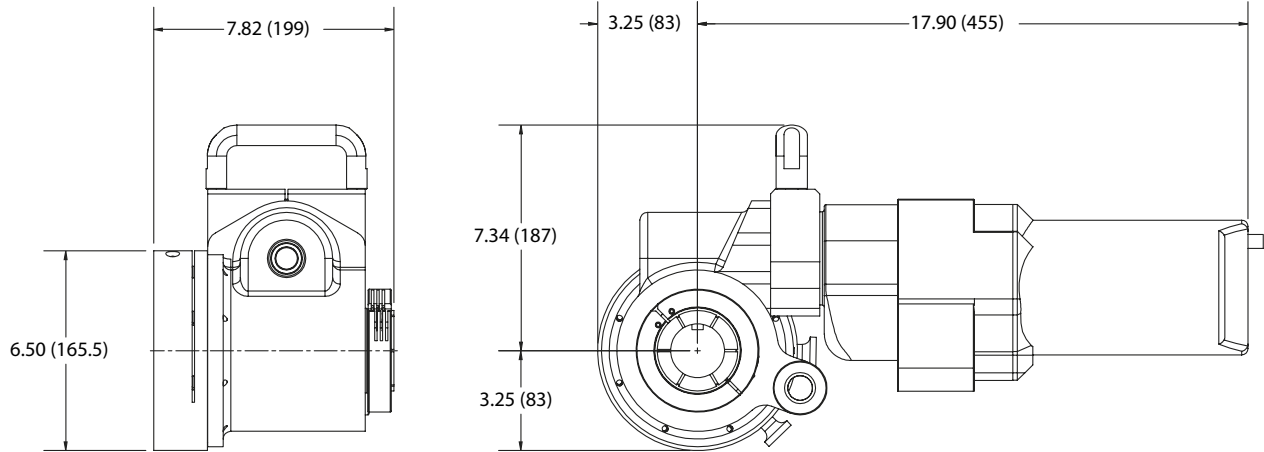
Length of boring bar required = X + 27½ inches (699 mm) + required stroke.

Cutting should be performed within 9 inches (229 mm) of a bearing support. Maximum recommended unsupported bar length between any two bearings is 36 inches (914 mm).

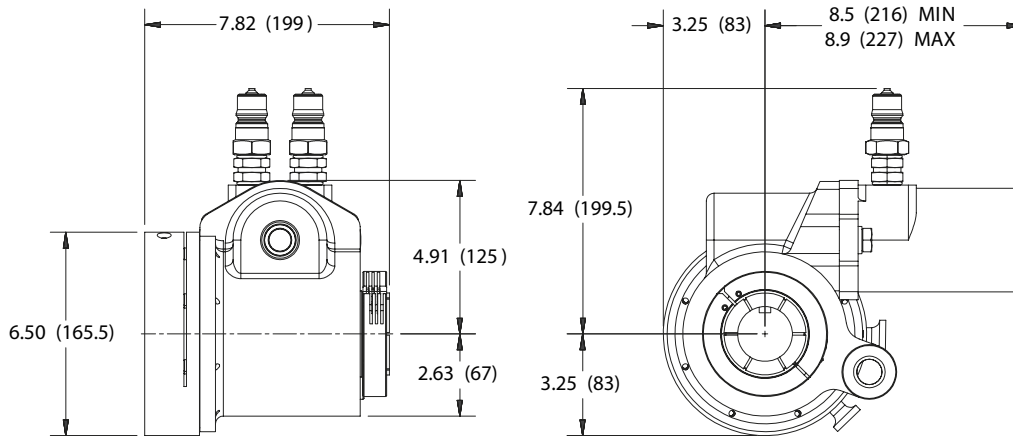
The space between the back of the bearing mounting plate and the face of the bore must be at least 3 inches (76 mm) for set-up cone removal. If the bore has a shoulder or boss, increase the height of the spacer plate and the length of the bar accordingly.



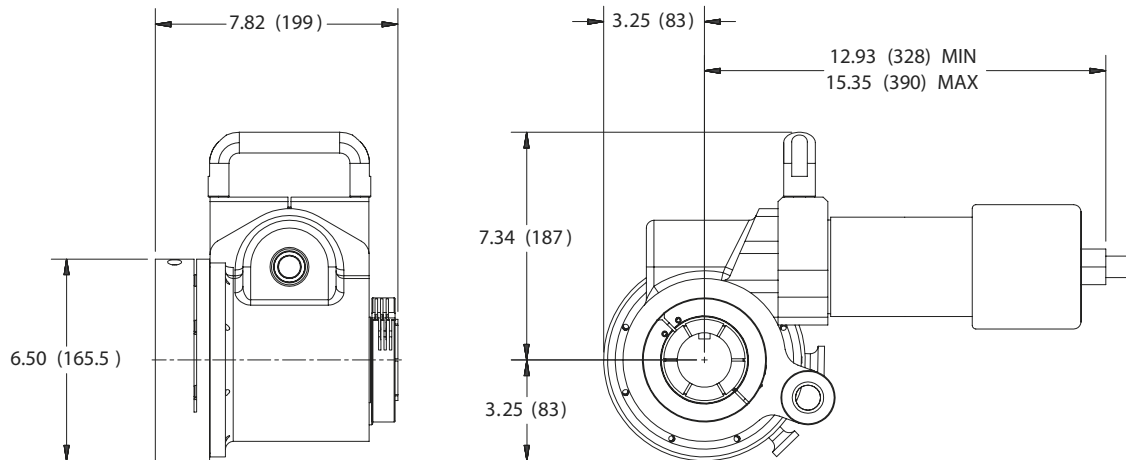
Dimensions in inch (mm)



Rotational drive unit with electric motor



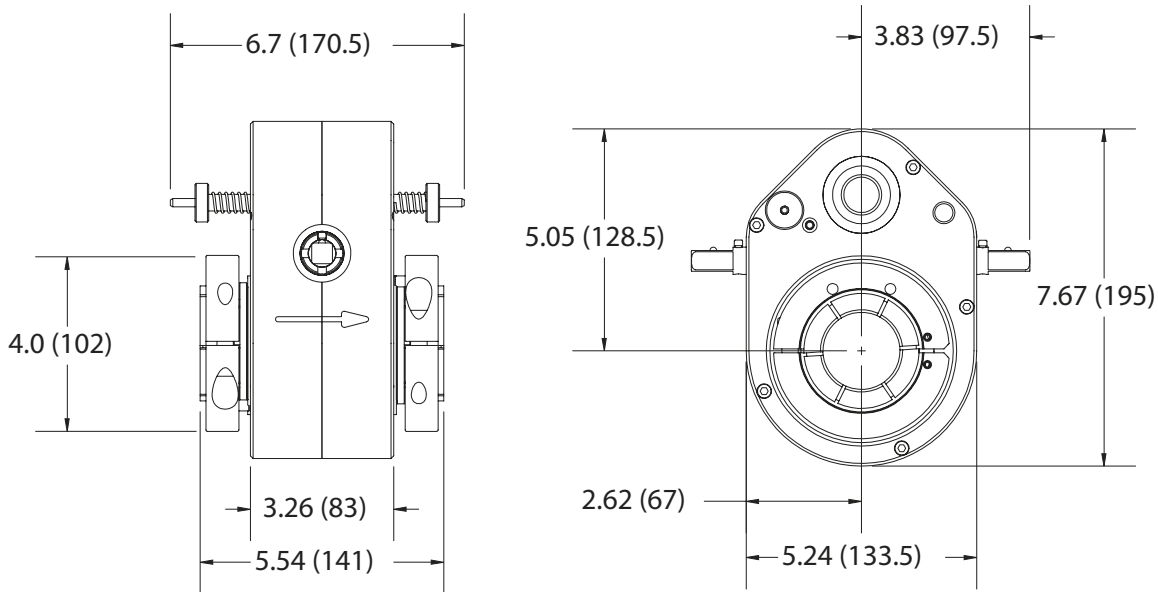
Rotational drive unit with hydraulic motor



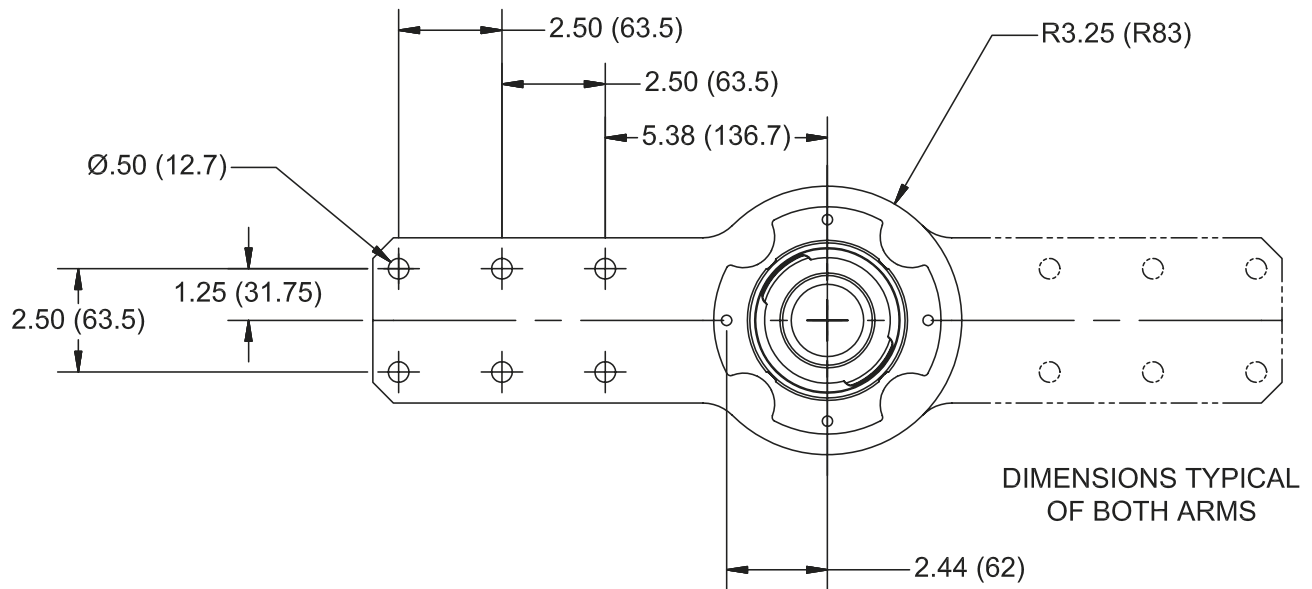
Rotational drive unit with pneumatic motor

Specifications subject to change without notice

Dimensions in inch (mm)

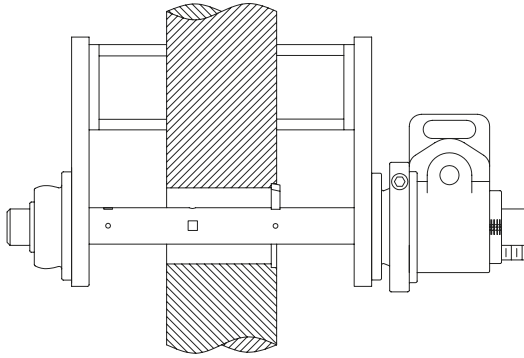


Axial feed unit

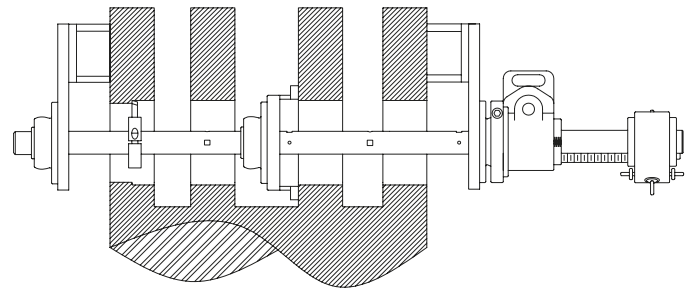


Spherical bearing mount assembly

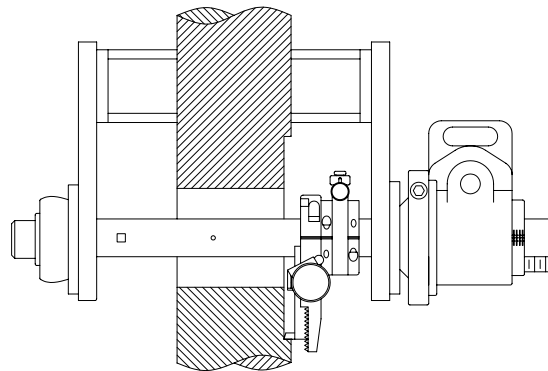
Specifications subject to change without notice



Conventional Boring



Line Boring



Facing/Grooving

Please note: Drawings are for reference only and may not represent actual product.

Machining Ability Example

Bore ID	3.875 inches (98.5 mm)
Bar RPM	40 rpm
Depth of Cut	0.1 inches
Feed Rate per revolution	0.019 inches/rev (0.48 mm/rev)
Material	mild steel
Cutter spec	HSS, ½ inch square
Distance between bearings	28.5 inches (724 mm)
Bar diameter	1.75 inches (44.5 mm)
Motor	42874 - 1.3 Hp (1 kW) electric 120 VAC
Speed Control	43241 - speed control
Distance from bearing to start of cut	6.75 inches (171.5 mm)
Length of cut	3.5 inches (88.9 mm)

A Fast Six-Step Process

Setup of the BB4500 Portable Boring Machine is quick and easy. An experienced operator can set up the machine in most typical two-bore line boring applications in about half an hour (depending on alignment tolerances). The three main ingredients of the quick setup system are:

- Set-up cones to roughly center the bar in the bore.
- Spherical mounts that can be quickly tack-welded in place.
- Quick-mount rotational drive unit, attaches to spherical bearing mount in seconds.

1 Slide the bar through the two holes to be bored and roughly center it with the set-up cones. The setup cones are forced into the bore with the clamp ring jacking screw and locked onto the bar with a set screw. Elapsed time: 4 minutes.



2 Slide on spherical mounts with tack weld plates and tack weld them to the workpiece. These mounts have spherical bearings so they can be mounted up to 5° out of perpendicular alignment. Elapsed time: 10 minutes.



3 Remove the set-up cones and replace the bar. The set-up cones will adequately center the bar, unless you have very precise tolerances or need to move the centerline of the bore slightly. Final centering adjustments are made with the jacking screws. Elapsed time: 5 minutes.



4 Slide the rotational drive onto the bar. Firmly push it onto the spherical mount, lock it in place with one bolt. Tighten the rear clamping collar enough to be snug but so the bar can slide through it. Elapsed time: 4 minutes.



5 The axial feed unit is slipped onto the bar and the feedscrew is screwed into the pocket on the rotational drive unit. Tightening two clamping collars locks the axial feed unit to the bar. Elapsed time: 3 minutes.



6 Insert a properly ground tool bit into the tool hole in the bar, adjust for depth of cut and lock in place with the set screw. Attach the hydraulic hoses. Elapsed time: 5 minutes. And there you are...ready to begin the first boring pass. Total elapsed time for setup: 31 minutes.



Your part number is: **BB4500** . **A** . **B** . **C** . **0** **D** **E** . **F** **G** . **H** **I**

(To generate your part number, write the number of each option you require in the corresponding box)

Configure your BB4500 in three easy steps.

To configure your BB4500 Boring Machine, you will need to:

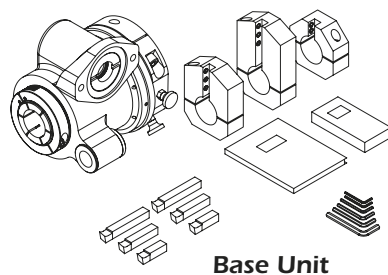
- 1 Select a Base Unit
- 2 Select a Drive Option
- 3 Select a Feed System
- 4 Select a Mounting System
- 5 Select a Boring Bar

To generate the correct part number for the boring machine you require, simply select the option you need in each step, then write the number of that option in the corresponding box at the top of this page. Contact your Climax representative for additional configurations or help with this process.

The base unit includes the RDU, tool kit, tool head, packaging, instruction manual, and set-up cones, according to the option you choose. The unit comes packed in a durable metal container.

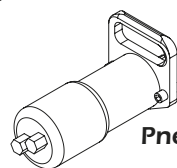
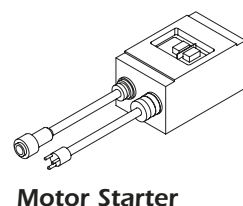
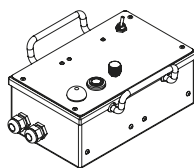
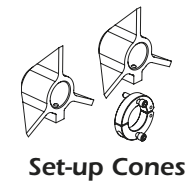
Step 1: Select a Base Unit

- A** Write the number of the Base Unit in Box "A."
- Number **1**: Standard inch package, with set-up cones (41733)
 - Number **2**: Standard metric package, with set-up cones (43471)
 - Number **3**: Standard inch package, no set-up cones (43470)
 - Number **4**: Standard metric package, no set-up cones (43472)



Step 2: Select a Drive Option

- B** Write the number of the drive option in Box "B."
- Number **0**: No speed control
 - Number **1**: 120 VAC speed control, non-CE compliant (for 1.3 Hp motors) (43241)
 - Number **2**: 230 VAC speed control, CE compliant (for 1.3 Hp motors) (43467)
 - Number **3**: 120 VAC in-line manual motor starter (for 1.3 Hp motors) (43468)
 - Number **4**: 230 VAC in-line manual motor starter (for 1.3 Hp motors) (43469)
 - Number **5**: 120 VAC speed control, non-CE compliant (for 2.3 Hp motors) (37517)
 - Number **6**: 230 VAC speed control, CE compliant (for 2.3 Hp motors) (37518)



- C** Write the number of the motor option in Box "C."
- Number **0**: No motor (order separately)
 - Number **1**: Electric 120 VAC single phase, 145/70 free speed bar rpm, 1.3 Hp (1 kW) at nominal rated full load (42874)
 - Number **2**: Electric 120 VAC single phase, 93/41 free speed bar rpm, 1.3 Hp (1 kW) at nominal rated full load (42973)
 - Number **3**: Electric 230 VAC single phase, 145/70 free speed bar rpm, 1.3 Hp (1 kW) at nominal rated full load (43343)
 - Number **4**: Electric 230 VAC single phase, 93/41 free speed bar rpm, 1.3 Hp (1 kW) at nominal rated full load (43269)
 - Number **5**: Electric 120 VAC single phase, 168/82 free speed bar rpm, 2.3 Hp (1.7 kW) at nominal rated full load (37558)
 - Number **6**: Electric 230 VAC single phase, 168/82 free speed bar rpm, 2.3 Hp (1.7 kW) at nominal rated full load (37560)
 - Number **7**: Hydraulic, 2.2 CIR (36.0 cm³), 148 bar rpm @ 6 gpm (22.7 L/min) and 1500 psi (103 bar) for 3.9 Hp (2.9 kW) (39837)
 - Number **8**: Hydraulic, 3.6 CIR (59.0 cm³), 90 bar rpm @ 6 gpm (22.7 L/min) and 1500 psi (103 bar) for 3.9 Hp (2.9 kW) (39843)
 - Number **9**: Hydraulic, 5.9 CIR (96.5 cm³), 55 bar rpm @ 6 gpm (22.7 L/min) and 1500 psi (103 bar) for 3.9 Hp (2.9 kW) (39844)

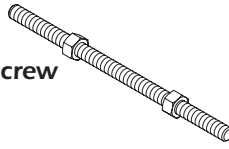
Pneumatic Motor also available. Please select 0, then order separately, using part number shown on accessories page.

Step 3: Select a Feed System

D Write the number of the lead screw in Box "D."

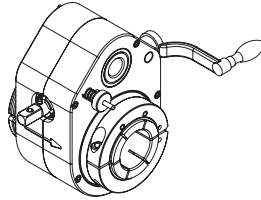
- Number **1**: 12 inch (304.8 mm) leadscrew (28654)
- Number **2**: 24 inch (609.6 mm) leadscrew (28687)

Leadscrew



E Write the number of the feed system in Box "E."

- Number **1**: Mechanical axial feed assembly (43378)

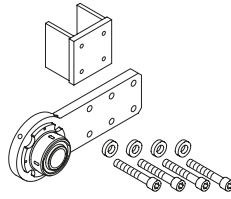


Axial Feed Assembly

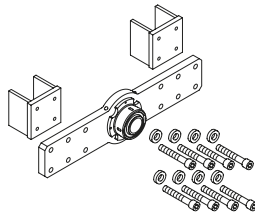
Step 4: Select a Mounting System

F Write the number of the arm style mount in Box "F." (Kit includes spherical bearings, support, and hardware.)

- Number **0**: None
- Number **1**: 1 Single arm mount (1 arm) (43262)
- Number **2**: 2 Single arm mounts (2 arms) (2X 43262)
- Number **3**: 3 Single arm mounts (3 arms) (3X 43262)
- Number **4**: 4 Single arm mounts (4 arms) (4X 43262)
- Number **5**: 1 Double arm mount (1 arm) (43279)
- Number **6**: 2 Double arm mounts (2 arms) (2X 43279)
- Number **7**: 3 Double arm mounts (3 arms) (3X 43279)



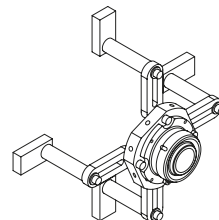
Single Arm Mount



Double Arm Mount

G Write the number of the universal bearing mounts in Box "G."

- Number **0**: None
- Number **1**: 1 Universal Mounting kit, 1 ring and bearing, plus supports and hardware (43267)
- Number **2**: 2 Universal Mounting kits, 2 rings and bearings, plus supports and hardware (2X 43267)
- Number **3**: 3 Universal Mounting kits, 3 rings and bearings, plus supports and hardware (3X 43267)
- Number **4**: 4 Universal Mounting kits, 4 rings and bearings, plus supports and hardware (4X 43267)

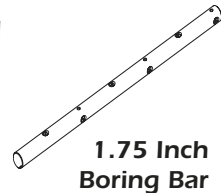


Universal Mount

Step 5: Select a Boring Bar

H Write the number of the standard boring bar in Box "H." Boring bar is 1-3/4 inch (44.5 mm) with tooling holes spaced every **10 inches (254 mm)**.

- Number **0**: None (order separately, see page 9)
- Number **1**: 48 inch (1219.2 mm) bar, 1/2 inch (12.7 mm) tooling holes (43318)
- Number **2**: 72 inch (1828.8 mm) bar, 1/2 inch (12.7 mm) tooling holes (43320)
- Number **3**: 96 inch (2438.4 mm) bar, 1/2 inch (12.7 mm) tooling holes (43321)
- Number **4**: 144 inch (3657.6 mm) bar, 1/2 inch (12.7 mm) tooling holes (43323)
- Number **5**: 48 inch (1219.2 mm) bar, 12 mm tooling holes (43305)
- Number **6**: 72 inch (1828.8 mm) bar, 12 mm tooling holes (43307)
- Number **7**: 96 inch (2438.4 mm) bar, 12 mm tooling holes (43308)
- Number **8**: 144 inch (3657.6 mm) bar, 12 mm tooling holes (43310)



1.75 Inch Boring Bar

I Write the number of the standard boring bar in Box "I." Boring bar is 1-3/4 inch (44.5 mm) with tooling holes spaced every **6 inches (152.4 mm)**.

- Number **0**: None (order separately, see page 9)
- Number **1**: 48 inch (1219.2 mm) bar, 1/2 inch (12.7 mm) tooling holes (43311)
- Number **2**: 72 inch (1828.8 mm) bar, 1/2 inch (12.7 mm) tooling holes (43313)
- Number **3**: 96 inch (2438.4 mm) bar, 1/2 inch (12.7 mm) tooling holes (43314)
- Number **4**: 144 inch (3657.6 mm) bar, 1/2 inch (12.7 mm) tooling holes (43316)
- Number **5**: 48 inch (1219.2 mm) bar, 12 mm tooling holes (43298)
- Number **6**: 72 inch (1828.8 mm) bar, 12 mm tooling holes (43300)
- Number **7**: 96 inch (2438.4 mm) bar, 12 mm tooling holes (43301)
- Number **8**: 144 inch (3657.6 mm) bar, 12 mm tooling holes (43303)

Further Customize your BB4500 Boring Machine with the boring bar options listed on Page 9

Further customize your BB4500 Boring Machine with these main boring bar options

Order separately (special customized bars available upon request)

1-1/4 inch (31.8 mm) bars, 3/8 inch square tooling holes spaced 6 inches (152.4 mm) apart

Part #	Length
40925	36 inch (914.4 mm)
39308	48 inch (1219.2 mm)
43693	72 inch (1828.8 mm)
39447	96 inch (2438.4 mm)

1-1/4 inch (31.8 mm) bars, 3/8 inch square tooling holes spaced 10 inches (254 mm) apart

Part #	Length
37337	48 inch (1219.2 mm)
37338	72 inch (1828.8 mm)
37339	96 inch (2438.4 mm)

1-1/4 inch (31.8 mm) bars, 10 mm square tooling holes spaced 6 inches (152.4 mm) apart

Part #	Length
43688	36 inch (914.4 mm)
43687	48 inch (1219.2 mm)
43686	72 inch (1828.8 mm)
43685	96 inch (2438.4 mm)

1-1/4 inch (31.8 mm) bars, 10 mm square tooling holes spaced 10 inches (254 mm) apart

Part #	Length
37327	48 inch (1219.2 mm)

1-3/4 (44.5 mm) bars, 1/2 inch square tooling holes spaced 6 inches (152.4 mm) apart

Part #	Length
43315	120 inch (3048.0 mm)
43312	60 inch (1524.0 mm)
43288	36 inch (914.4 mm)

1-3/4 (44.5 mm) bars, 1/2 inch square tooling holes spaced 10 inches (254.0 mm) apart

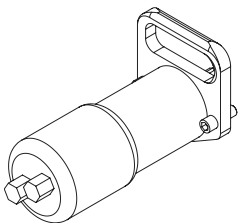
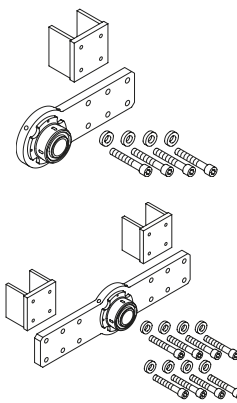
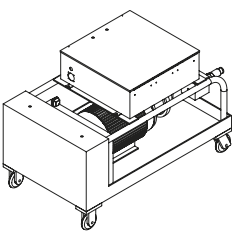
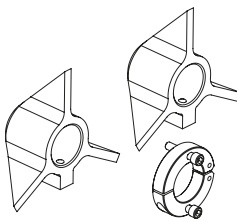
Part #	Length
43322	120 inch (3048.0 mm)
43319	60 inch (1524.0 mm)
43317	36 inch (914.4 mm)

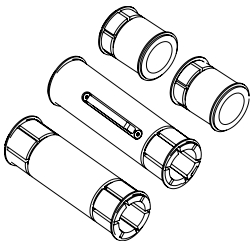
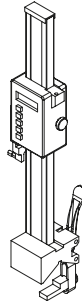
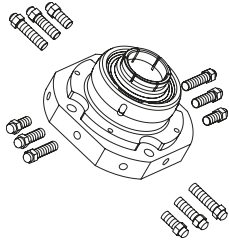
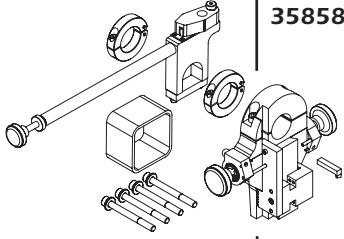
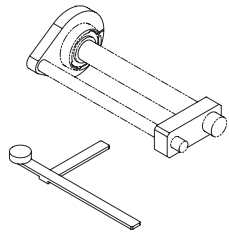
1-3/4 (44.5 mm) bars, 12 mm square tooling holes spaced 6 inches (152.4 mm) apart

Part #	Length
43302	120 inch (3048.0 mm)
43299	60 inch (1524.0 mm)
43297	36 inch (914.4 mm)

1-3/4 (44.5 mm) bars, 12 mm square tooling holes spaced 10 inches (254.0 mm) apart

Part #	Length
43309	120 inch (3048.0 mm)
43306	60 inch (1524.0 mm)
43304	36 inch (914.4 mm)

	NO.	DESCRIPTION		NO.	DESCRIPTION
	37498	Pneumatic Motor Assembly The motor comes complete, ready for 2-bolt mounting directly on the rotational drive. Includes pneumatic conditioning unit. 57 bar rpm @ 95 scfm (2.7 m ³ /min) and 90 psi (620 kPa) for 3.0 rated Hp (2.2 kW). Includes air conditioning unit.			Spherical Bearing Mounts Available in single arm, double arm, and universal mount styles, our spherical bearing mounts attach directly to the work piece, and accept both the model BB4500 rotational drive, and the mounting bracket for the Climax AutoBoreWelders.
	39112	120 bar rpm @ 95 scfm (2.7 m ³ /min) and 90 psi (620 kPa), for 3.0 rated Hp (2.2 kW). Includes air conditioning unit.		43262 Single arm. 43279 Double arm. 43267 Universal.	
		Hydraulic Power Unit The popular 5 Hp (3.7 kW) unit with 230 V, 60 Hz 3-phase electric motor pumps 6 gal/min (22.7 L/min), with variable displacement pump, allows speed control even while running. Comes complete with controls, gauges, and hoses. Many models available.	 <p>Please note: Drawings are for reference only and may not represent actual product.</p> <p>(continued - next page)</p>		Set-up Cones Two sizes (smallest size addressed in the small bore adapter kit) of set-up cones center the bar in the bore. The sets cover a bore range 2.0 - 10 inches (50.8 - 254 mm) in diameter. Set screws and back-up clamp collars hold the cones in place while the components are being attached.
				43383 Set of 2 set-up cones for 2-6 inch (50.8 - 151.4 mm) bore ID. 43384 Set of 2 set-up cones for 6-10 inch (151.4 - 254 mm) bore ID.	

	NO. DESCRIPTION		NO. DESCRIPTION
	<p>Small Bore Adapter Kits Includes everything you need for boring holes as small as 1.5 inch (38.1 mm) in diameter.</p> <p>43648 Set of adapter sleeves: 1 for Rotational Drive Unit, 1 for Axial Feed Unit, 2 for bearings.</p> <p>43828 Set of adapter sleeves: 1 for Rotational Drive Unit, 1 for Axial Feed Unit, 2 for bearings, 1-1/4 inch (31.8 mm) diameter by 48 inch (1219.2 mm) long boring bar with 3/8 inch square tooling holes spaced 10 inch (254 mm) apart, HSS cutting tools, set of 2 set-up cones.</p> <p>43829 Set of adapter sleeves: 1 for Rotational Drive Unit, 1 for Axial Feed Unit, 4 for bearings, 1-1/4 inch (31.8 mm) diameter by 72 inch (1828.8 mm) long boring bar with 3/8 inch square tooling holes spaced 10 inch (254 mm) apart, HSS cutting tools, set of 2 set-up cones.</p>		<p>Bore Measuring Tool Allows precision bore measurement and sets tool bit height while the bar is still mounted in the work piece.</p> <p>43421 18 Inch (457.2 mm) diameter tool, measures up to 18 inch (457.2 mm) diameter bores with 3/8 inch (9.5 mm) stylus.</p> <p>43921 same as above, but includes both 3/8 inch (9.5 mm) and 7/8 inch (22.2 mm) length styluses.</p>
	<p>ID Spherical Bearings Mount inside the bore to provide extra rigidity when other mounting options are not possible. ID mounting range is 7.6 - 10.7 inches (193.1 - 271.7 mm).</p> <p>43931 ID Bearing Mount and Jacking Bolts.</p> <p>37621 Jacking Bolt Set which turns a Universal Bearing Mount into an ID Bearing Mount.</p>		<p>Tool Kits (included in base unit)</p> <p>43580 Tool Kit (inch) Tools Bits for Single Point Machining 1 HSS 1/2 inch square x 4.0 inch (101.6 mm) LH Roughing. 1 HSS 1/2 inch square x 4.0 inch (101.6 mm) LH Finishing. 1 HSS 1/2 inch square x 2.5 inch (63.5 mm) LH Roughing. 1 HSS 1/2 inch square x 2.5 inch (63.5 mm) LH Finishing. 1 HSS 1/2 inch square x 1.8 inch (45.7 mm) LH Roughing. 1 HSS 1/2 inch square x 1.8 inch (45.7 mm) LH Finishing.</p> <p>Tools Torx wrench, T-27. End wrench, long, 1/2 inch. Hex wrench set, .050-3/8 inch. End wrench, 1-1/2 inch.</p>
	<p>35858 Facing and Grooving Head Assembly Mounts anywhere on the bar to face 3 - 12 inches (76.2 - 304.8 mm), and cut grooves from 3.5 - 12 inches (88.9 - 304.8 mm) in diameter. Radial feed rate: 0 to .050 in/rev (1.27 mm/rev).</p>		<p>43582 Tool Kit (metric) Tools Bits for Single Point Machining 1 HSS 12 mm square x 4.0 inch (101.6 mm) LH Roughing. 1 HSS 12 mm square x 4.0 inch (101.6 mm) LH Finishing. 1 HSS 12 mm square x 2.5 inch (63.5 mm) LH Roughing. 1 HSS 12 mm square x 2.5 inch (63.5 mm) LH Finishing. 1 HSS 12 mm square x 1.8 inch (45.7 mm) LH Roughing. 1 HSS 12 mm square x 1.8 inch (45.7 mm) LH Finishing.</p> <p>Tools Torx wrench, T-27. End wrench, long, 1/2 inch. Hex wrench set, .050-3/8 inch. End wrench, 1-1/2 inch. Hex wrench set, 1.5 - 10 mm.</p> <p>Please note: Drawings are for reference only and may not represent actual product.</p>
	<p>43731 Automatic Bore Welding Accessories The BoreWelding interface kit allows you to attach and quickly align the Climax AutoBoreWelders for efficient bore welding. Includes adapter plate, alignment tool, and spherical bearing removal wrench.</p>		

Training at the Portable Machining Training Institute

Climax has been teaching the fundamentals and fine points of portable machine tool operation for practically as long as we've been inventing and building the tools.

At the Portable Machining Training Institute situated in our corporate headquarters near Portland, Oregon, we provide training for machine tool operators on portable machine tool safety, machine setup and operation. Trainees also receive technical tips and tools to improve operational efficiencies. With the vast majority of every program devoted to hands-on activities and skills development. The Climax instructional team includes specialists in shipbuilding, power generation, civil engineering, bridge re-building, and other industries.

Whether it's a regularly scheduled course at the Portable Machining



Training Institute, or a custom curriculum conducted at your facility, your machinists will benefit from courses developed by some of the most respected authorities in the business.



Call us today to register for a regularly scheduled class, or to talk to us about how we can customize a training program for your specialized application.

Climax Portable Machine Tools Worldwide Manufacturing, Sales & Rental Facilities



Call Climax for:

Rentals

With six locations in the USA, two in Canada, one in Europe, and one in Asia you are never far away from a Climax portable machine tool.

Special Projects

Climax has been solving complicated on-site machining problems for our customers since 1964.

On-site Training

Need some refresher courses in setting up and operating your Climax machine tool?

Call us. We'll bring the solution to you.

BB45-2.5M0505

Corporate Headquarters

Climax Portable Machine Tools, Inc.
2712 E. Second Street, P.O. Box 1210
Newberg, Oregon 97132 USA
Worldwide Telephone: 503.538.2185
USA Toll-Free: 800.333.8311
Fax: 503.538.7600
Email: info@cpmt.com

European Headquarters

Climax GmbH
Willi - Bleicher - Strasse 11
52353 Düren, Germany
Telephone: (+49) (0) 2421.9177.0
Fax: (+49) (0) 2421.9177.29
Email: info.de@cpmt.com

Houston Sales Office

Climax Portable Machine Tools, Inc.
16823 Highway 35
Pearland, TX 77581 USA
Telephone: 281.469.0429



CLIMAX®
Portable Machine Tools, Inc.

www.cpmt.com